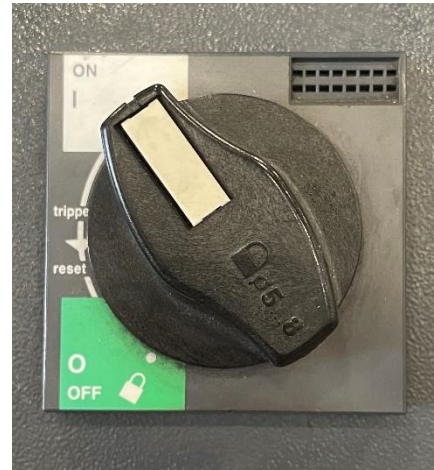
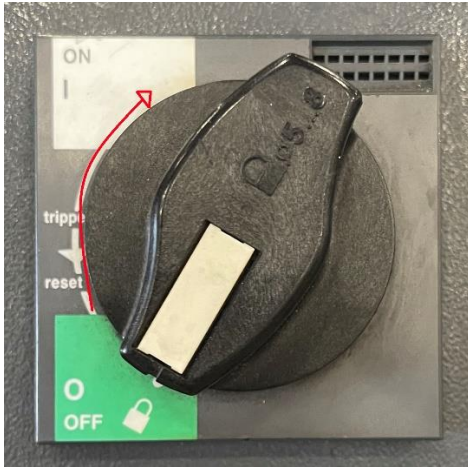


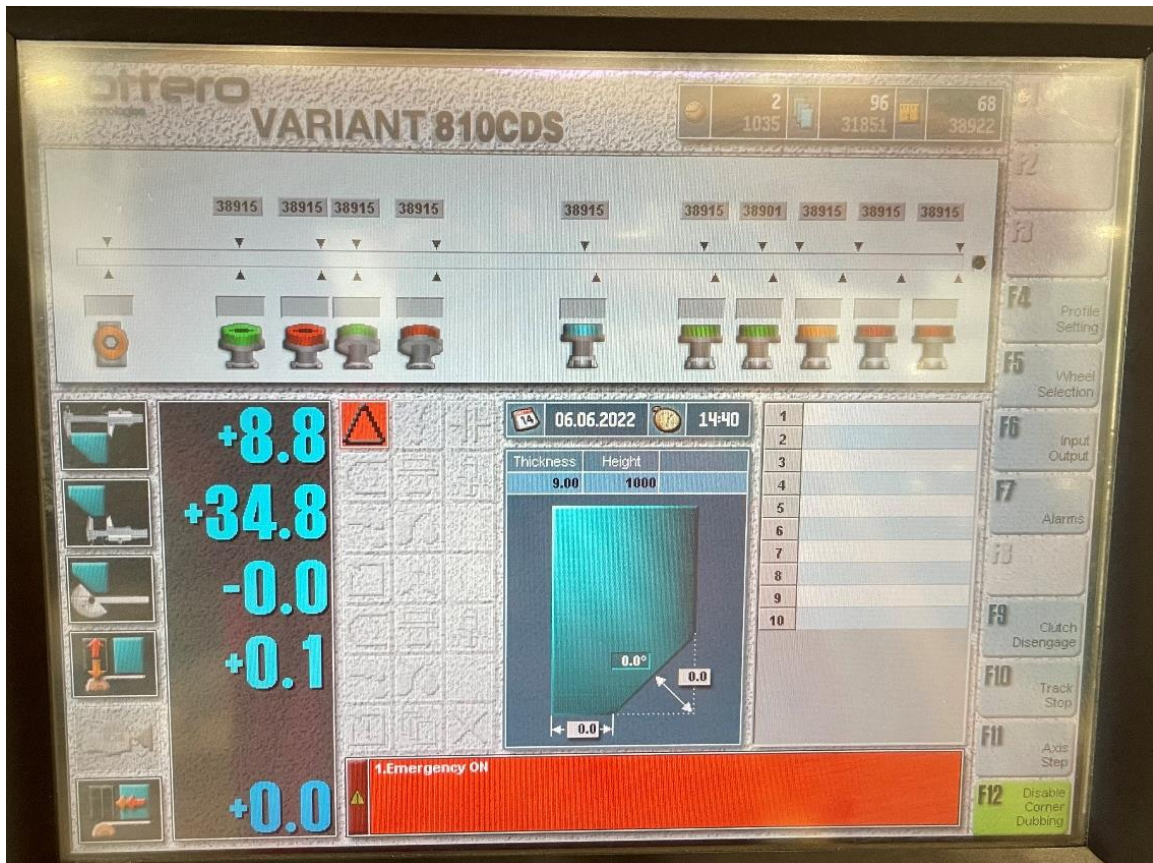
# Manual basic operations for Variant 810 CDS

## Start the machine:

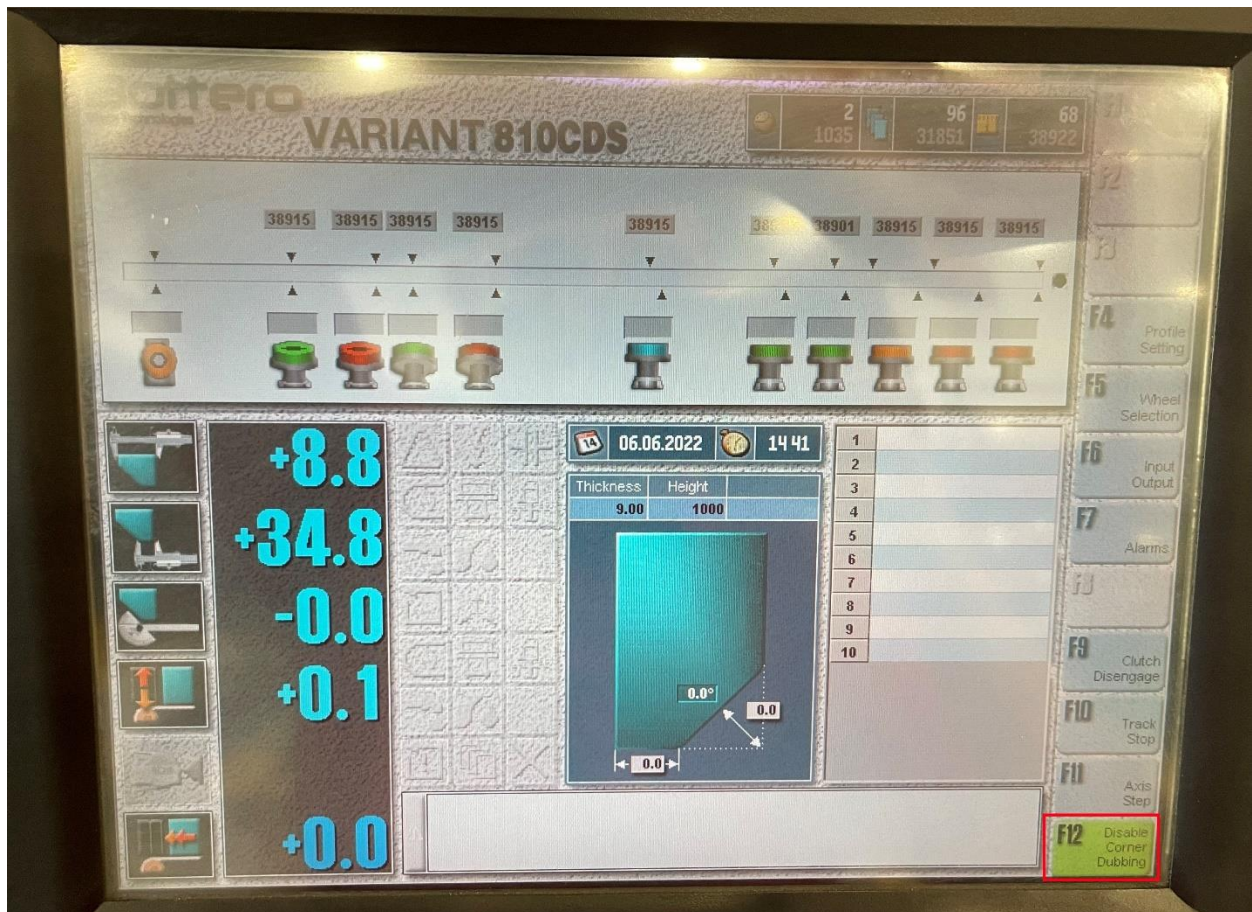
1. Rotate the power switch to on position, as shown in the example:



2. After a couple minutes the following screen will appear:



Verify that the dumb corner option is disabled before starting to pass the glass, the light of this option must be turned off, to disable this option, the Disable Corner Dubbing option must be selected.



Alarms must be reset as follows:

2.1 Rotate the key under the danger symbol, the red light should stop flashing.



2.2 Press the green button under the key you rotated previously, it should turn on.



3. To finish the machine initialization, press the flashing green button.



**About operation:**



With this wheel you will control speed which the glass passes through the polisher, ideally the speed for each type of glass should be the following:

¼” and 3/16” to 5m/min

3/8” to 3m/min

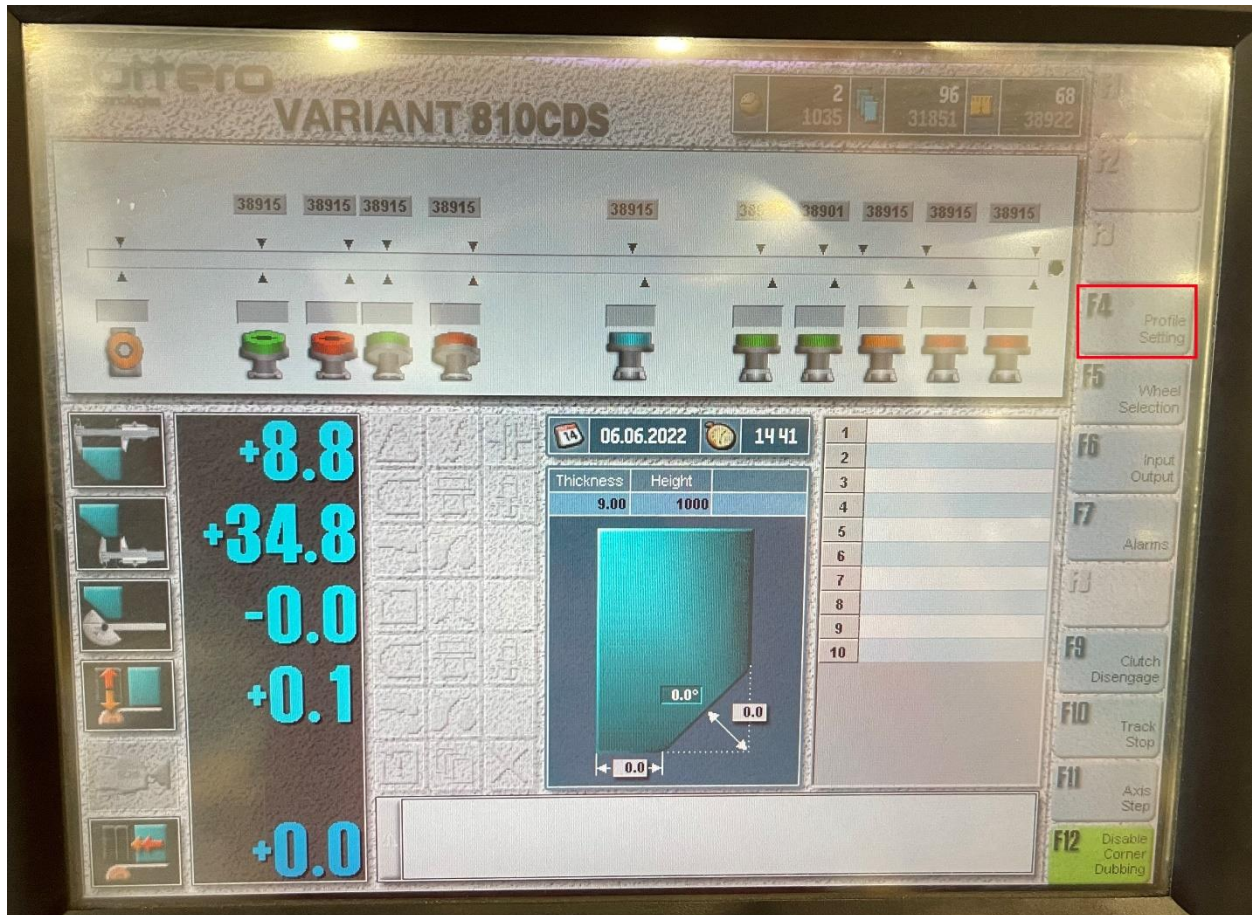
½” to 2.5m/min.



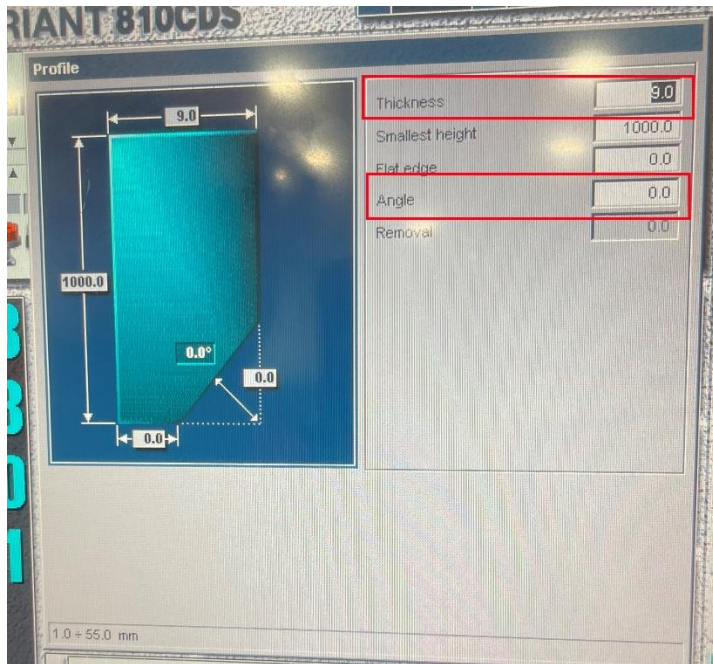
With this wheel the height of the glass to the polishing wheel is controlled, the higher the number, the lower the height will be, and the stones will scabble more.

To calibrate the machine, you must set this wheel to zero, calibrate each motor and start passing glass pieces until they are well polished and with the ideal measurement, the polisher should scabble 3/32” per pass.

**Glass thickness setting:**



To set the thickness of a glass, select Profile Setting, then enter the thickness of the glass, note that whenever you are going to change the thickness of the glass, you must measure this thickness with a caliper. Note that the thickness of the glass will shows up on the screen with a difference of 2mm,



since in this way the machine will ensure that the glass is well secured and doesn't fall during the entire run.

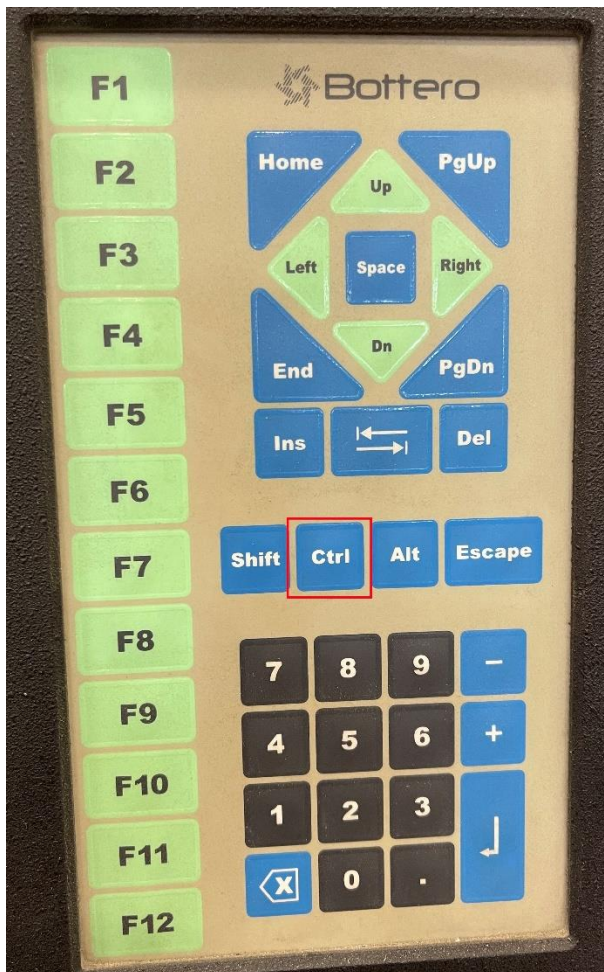
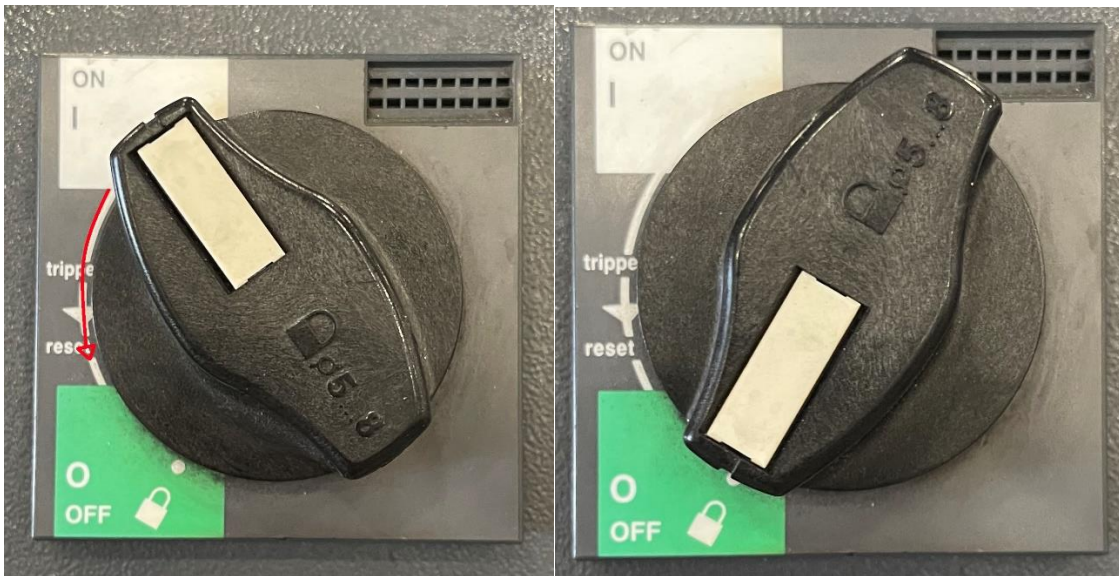
**Mitter:** In case you want to make Mitter, you must enter its angle.



**Motor alarm:** In case a motor alarm shows up on the screen, the machine must be opened and check if any of the switches have tripped, all the brakes must have the red part up and the black part down.

## Machine shutdown:

1. To turn off the polisher, the power button must be turned off.



2. Press the Ctrl key and then select shutdown.

3. Finally, select OK, then Exit and OK again to complete the process.

